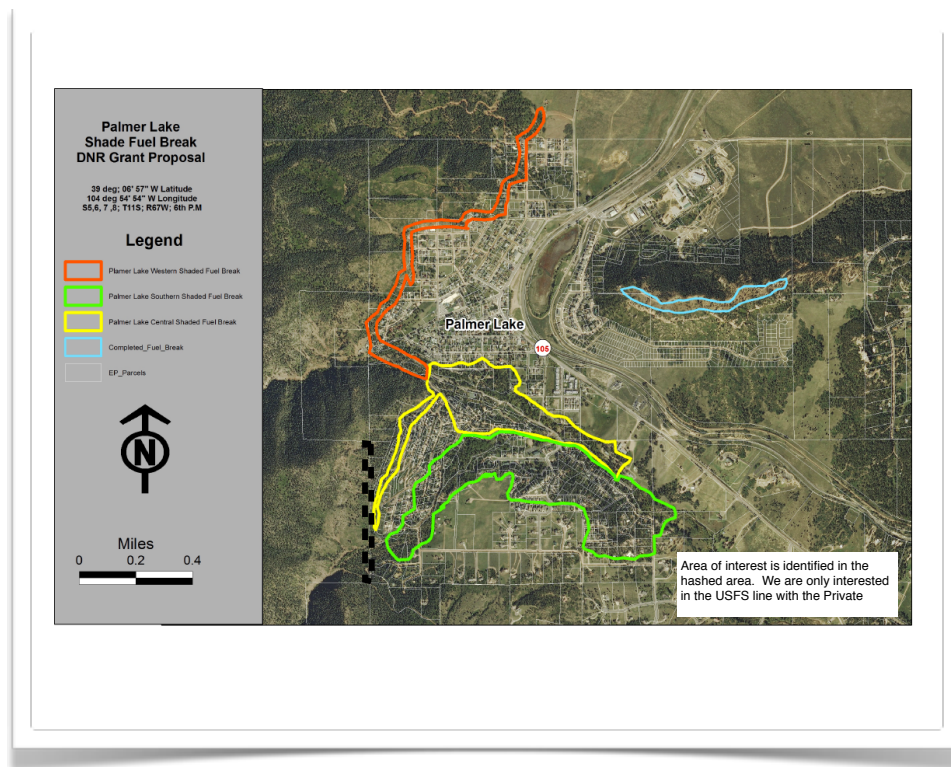


Mapping Mitigation

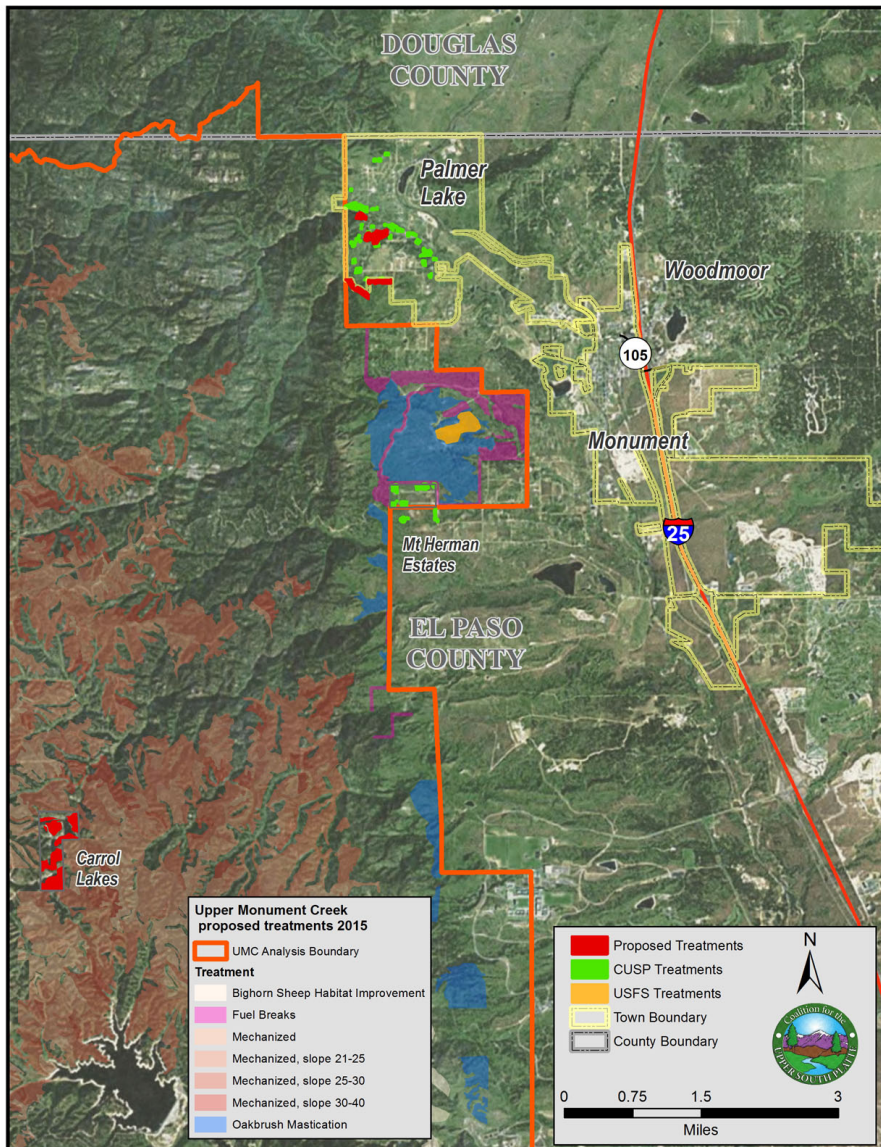
Using Maps to tell a story and increase Mitigation



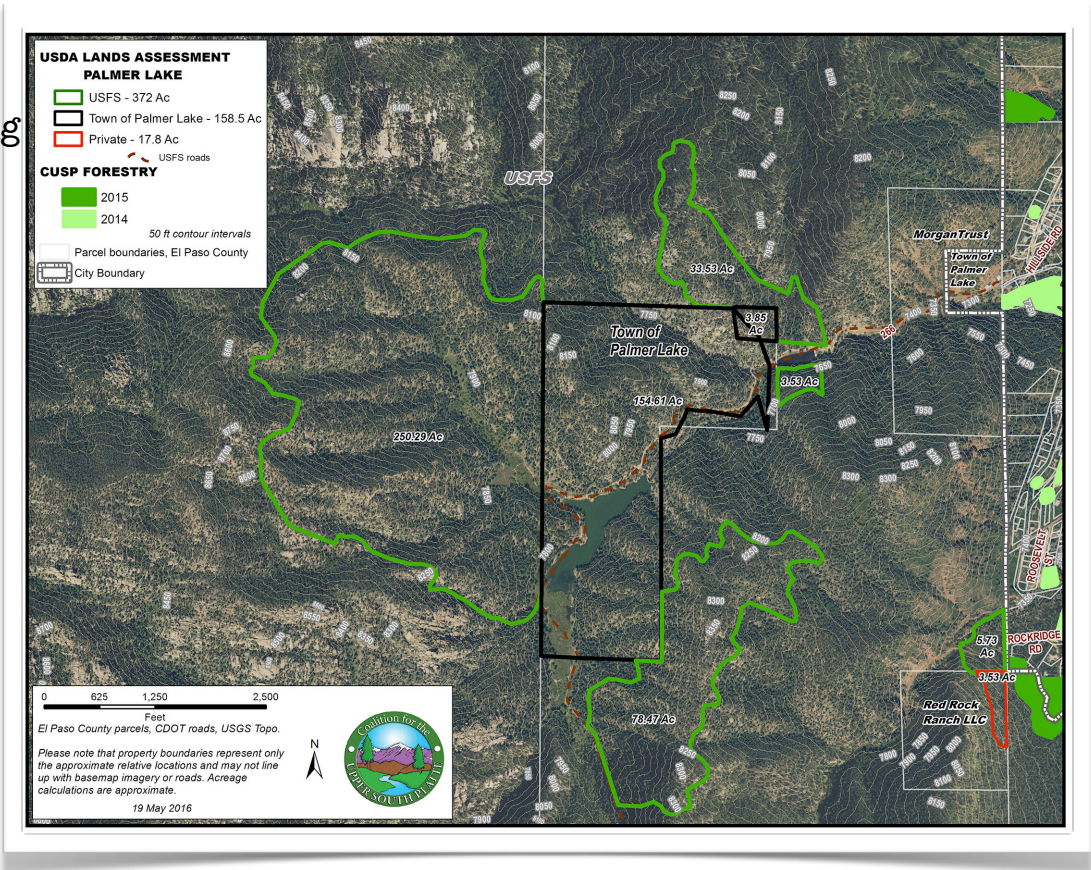
Maps are like campfires everyone gathers around them, because they allow people to understand complex issues at a glance, and find agreement about how to help the land. -Sonoma Ecology Center

Maps are an important tool at all phases of the mitigation cycle. Essential in planning, maps aid in the identification of risk and in the prioritization of where to spend limited funding. Maps can help tell the story, incite change and show what has been accomplished and what additionally needs to be completed.

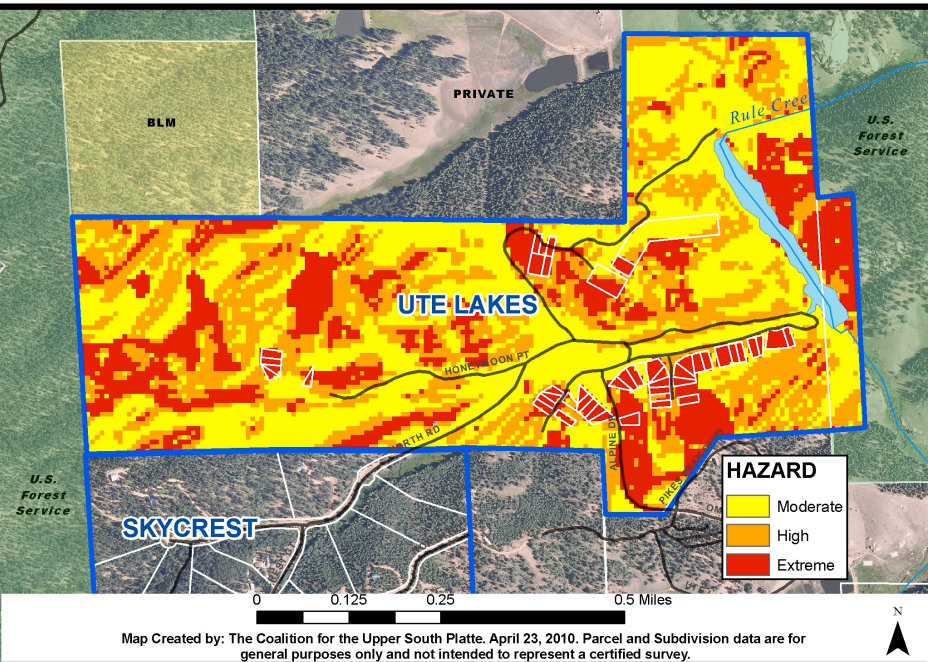
Landscape scale maps provide a 60,000' view and are helpful in understanding very large areas.



Project Level maps are essential when presenting information to communities, for grants, and in planning and reporting phases



UTE LAKES FISHING & RECREATION CLUB LAND WUI MAP



Subdivision Level mapping is aimed directly at the residents. Residents can readily see their risk and their neighbors. This map represents both a subdivision and parcel level risk. Parcel level risk maps can further pinpoint the risk.

