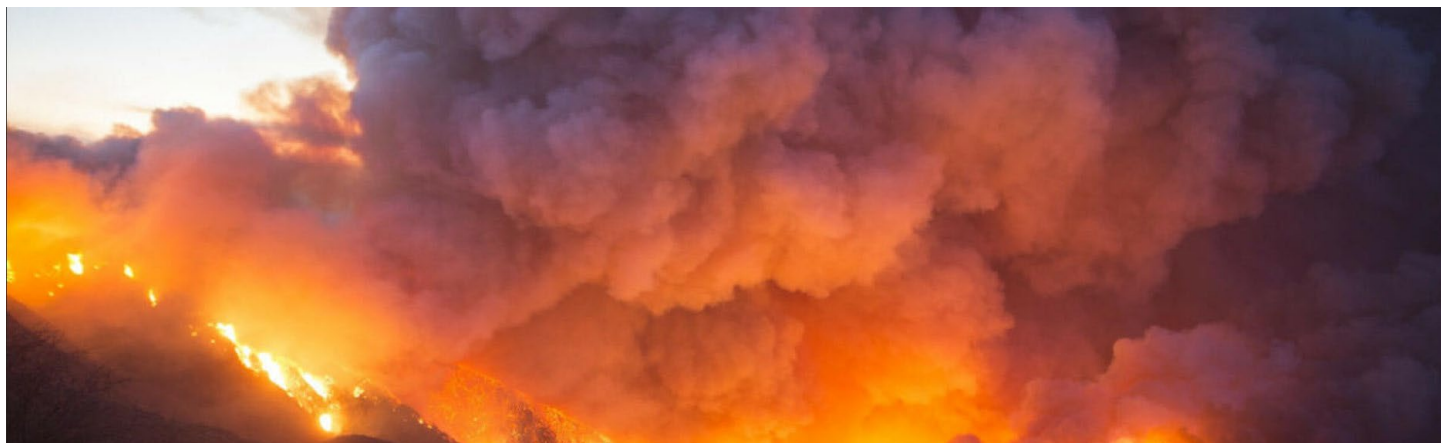


Wildland Fire Risk Assessment Clearinghouse



[Launch the Wildland Fire Risk Assessment Clearinghouse](#)

Bipartisan Infrastructure Law directive

The Clearinghouse of Fire Risk and Hazard Assessments was created by the DOI Office of Wildland Fire and USGS to meet requirements of the Monitoring, Maintenance and Treatment Plan under the Bipartisan Infrastructure Law (BIL). It provides a single clearinghouse of national and key regional wildfire risk and fire hazard assessments useful for understanding different characterizations of fire risk and communicating contributions toward risk reduction of treatments funded by DOI under BIL. For each assessment, the clearinghouse provides an analysis of the values at risk, metadata, and assumptions used to assign priorities. The aggregated data will be used to communicate priorities of treatment application to DOI landscapes. This clearinghouse recognizes no assessment perfectly represents all lands, as values at risk and choice of methodology creates variation in the ranked priorities. In the near term, this variation creates an opportunity to present a multi-perspective view of treatment priorities at the Bureau or Departmental level. Longer term, this clearinghouse will provide an evaluation of each approach and perform a gap analysis on values at risk, contributing towards new approaches needed to account for treatment priorities across the diversity of DOI lands.

Purpose

This online tool was designed to help identify which wildfire hazard and risk assessments are available across the United States. It provides information about available risk assessments and links to assessment data when publicly available.

Individual assessments

Directly access individual assessments listed below using the links to most recent documentation, data, and maps.

Assessment name	Documentation	Data	Online Map
Bureau of Land Management Fire Risk Assessment	Story Map		Viewer
Colorado Wildfire Risk Assessment Project	PDF		
CoreLogic 2019 Wildfire Risk Report	PDF		

Federal Emergency Management Agency National Risk Index: Wildfire	PDF	ArcGIS Online	Viewer
First Street Foundation Wildfire Model	PDF		
IFTDSS - QWRA (Interagency Fuel Treatment Decision Support System - Quantitative Wildfire Risk Assessment)	Web	Web	
National Burn Probability Map	Web	Web	Viewer
National Wildfire Risk Assessment for Forest Service Lands	Web		
Pacific Northwest Quantitative Wildfire Risk Assessment	PDF		
Southern Sierra Nevada Wildfire Risk Assessment	PDF		
Southern Wildfire Risk Assessment			
Texas Wildfire Risk Assessment Portal			Viewer
USFS Firesheds and Fireshed Registry	Web	Web	Web
West Wide Wildfire Risk Assessment	PDF		
Wildfire Hazard Potential for the United States	Web	Web	Web
Wildfire Risk to Communities	Web	Web	Web
STARFire Idaho BLM	Web	Web	Viewer
Teton Interagency Wildfire Hazard Report	PDF		
Colorado Assessment (State)			
Colorado Assessment (USFS)	PDF		
Great Basin Quantitative Risk Assessment	Web		
Kansas Assessment	Web		
Montana Wildfire Risk Assessment			
Nebraska Assessment			
Northern Region Wildfire Risk Assessment	PDF		
USFS Region 2 Rio Grande National Forest Quantitative Wildfire Risk Assessment	PDF		
USFS Region 2 San Juan National Forest Quantitative Wildfire Risk Assessment	PDF		
USFS Region 3	Web		
USFS Region 4 Wildfire Hazard Report	PDF		
USFS Region 5 Southern California Quantitative Wildfire Risk Assessment	PDF		
USFS Region 9			
USFS Region 9 Superior National Forest	Web		

Contacts

Todd Hawbaker
Research Ecologist
Geosciences and Environmental Change Science Center
Email tjhawbaker@usgs.gov
Phone 303-236-1371

Partners

[U.S. Department of Interior - Office of Wildland Fire](#)